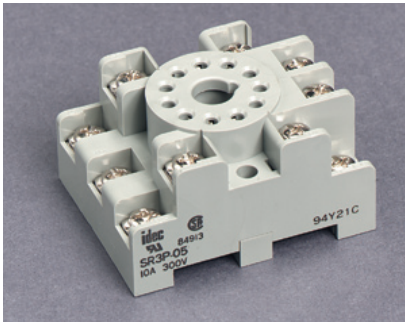


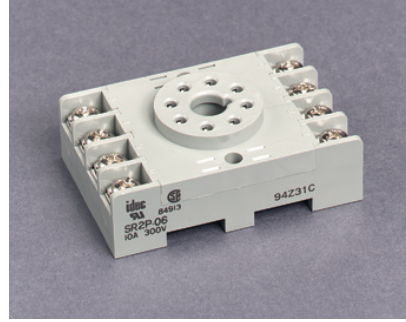
# Sockets, Holddown, DIN Rail & DIN Brackets



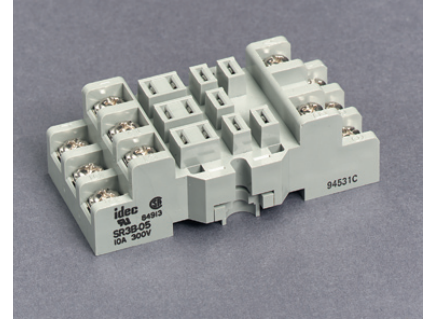
## 8 Pin & Blade Base Sockets



**SR2P-05**

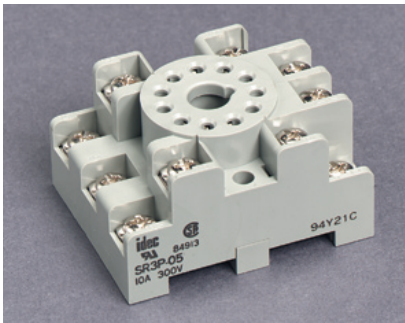


**SR2P-06**

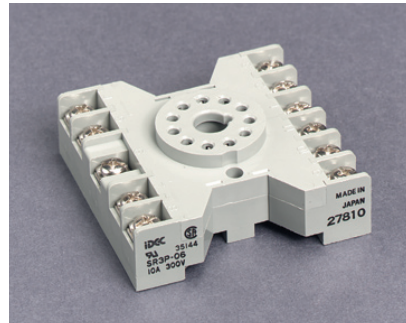


**SR3B-05**

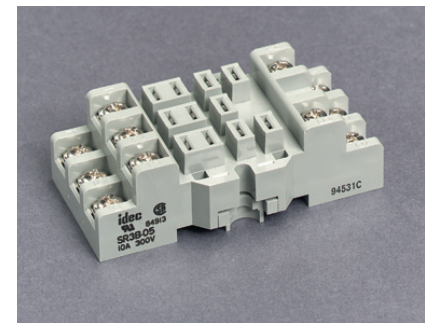
## 11 Pin & Blade Base Sockets



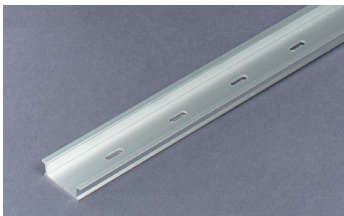
**SR3P-05**



**SR3P-06**



**SR3B-05**



**Mounting Track/  
DIN Rail  
BNDN-1000**

(Old Part #'s BND-1000 & BAM1000)

## Holddown (Elastic)

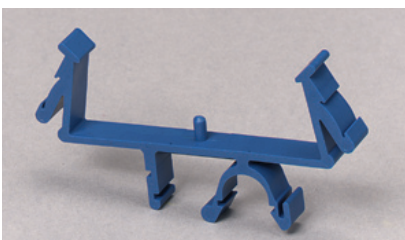


**DLHD-6**

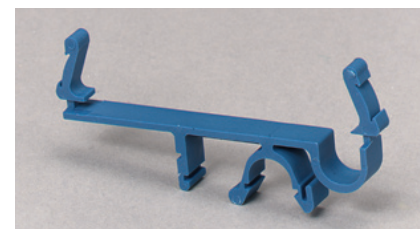
## DIN Rail Brackets



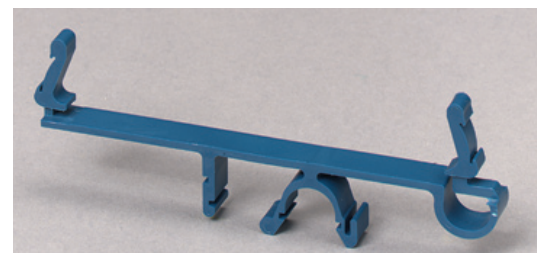
**DRB-1**  
RCS, RDS & SP



**DRB-2**  
(2 per packet)  
Solid State Timers,  
LTS, MCDR, RCS5,  
\_RCC,\_RCS & RCM



**DRB-3**  
(2 per packet)  
Phase Relays,  
ZVM 6000/7000



**DRB-4**  
RCD, RCY,  
CSR & CSRA